

THE UNIVERSITY OF FLORIDA



New UF Faculty Senators Orientation

Thursday, August 22, 2013

Marc Heft
Chair

Today's agenda

- Welcome and introductions
- President Bernie Machen
- UF Senate 101
- Barbara Wingo

President Machen

What is the Faculty Senate?

Marc Heft
Chair

The University of Florida has over 5,000 faculty members with distinguished records in teaching, research and service...

including:

52 Eminent Scholar chairs

35 members of the National Academies

We're pleased to have you join us!

Faculty have many titles, including:

Professor, Associate Professor, or Assistant Professor
Research Professor, Associate Research Professor, or
Assistant Research Professor

Clinical Professor, Clinical Associate Professor, or Clinical
Assistant Professor

Curator, Associate Curator, or Assistant Curator

Scientist, Associate Scientist, or Assistant Scientist

Scholar, Associate Scholar, or Assistant Scholar

Engineer, Associate Engineer, or Assistant Engineer

Distinguished Professor...

- Extension Scientist, Associate Extension Scientist, or Assistant Extension Scientist
- University Librarian, Associate University Librarian, or Assistant University Librarian
- Master Lecturer, Senior Lecturer, or Lecturer
- PKY University Developmental Research School Professor, PKY Associate Professor, PKY Assistant Professor, or PKY Instructor
- County Extension Agent IV, County Extension Agent III, County Extension Agent II, County Extension Agent I

Faculty members play a central role in shared governance at UF, in units at every level:

University

College

Departments and Centers
and even Statewide

Five Principles of Shared Governance

1. Mutuality, Collegiality and Collaboration
2. Transparency
3. Representative Participation
4. Mutual Accountability
5. Clarity of Roles

Indicators of Shared Governance (AAUP Website)

- BOT and President verbally acknowledge the importance of shared governance
- Faculty members can express dissenting views on governance without reprisal
- Relationships between/among faculty, administration and governing board are cooperative
- Campus climate supports a diversity of ideas
- Communications are transparent and carried out in good faith
- Faculty committees determine ***educational policy, curriculum design, curriculum review, and standards for evaluating teaching and scholarship.***
- Faculty committees largely determine ***standards for hiring, retention and promotion*** of faculty
- Faculty sets agendas, chooses representatives and leadership, and establishes procedures for committees that oversee those areas in which the faculty has primacy.
- Faculty has an influential role in developing the institutional budget
- The faculty has a strong influence on the selection and evaluation of academic administrators

The UF Faculty Senate

<http://www.senate.ufl.edu/>

The Faculty Senate shall be ***the legislative body of the University***, thereby providing a forum for mutual exchange of ideas between senior officers and faculty.

-- *UF Constitution*

In this capacity, the Senate shall take cognizance of, and may legislate with respect to ***matters which concern more than one college, school, or other major academic unit, or which are otherwise of general university interest.***

-- *UF Constitution*

Senate Organization

The organization and operation of the Faculty Senate is specified in the UF Constitution and Bylaws

<http://www.generalcounsel.ufl.edu/downloads/Constitution.pdf>

<http://www.generalcounsel.ufl.edu/downloads/Bylaws.pdf>

Senate Membership

Senate members are elected proportionally according to the number of faculty in each college (with a maximum of 25), for a total of 150 Senators

Senate Principles

The Faculty Senate is designed to be a deliberative body in which active and evolving discussion with colleagues shapes policy

Accordingly, **no proxy or absentee votes are allowed**

Faculty Senate Normal Process

- Items presented at the faculty senate have received prior approval at a faculty steering committee meeting
- Procedure requires that any measure takes at least two meetings to be approved
- Proposals are first presented as an information item, then return for a vote as an action item in the following meeting
- Delay is deliberate in order to allow for full discussion and an informed vote

Faculty Senate Steering Committee

Officers:

Marc Heft, Chair, Dentistry
Cheri Brodeur, Past Chair, IFAS
Pradeep Kumar, Chair Elect, CLAS

Council Chairs:

Florin Curta, Budget
Sharda Udassi, Infrastructure
Mirka Koro-Ljungberg, Research
Galia Hatav, Faculty Welfare
Renee Goodrich, Academic Policy

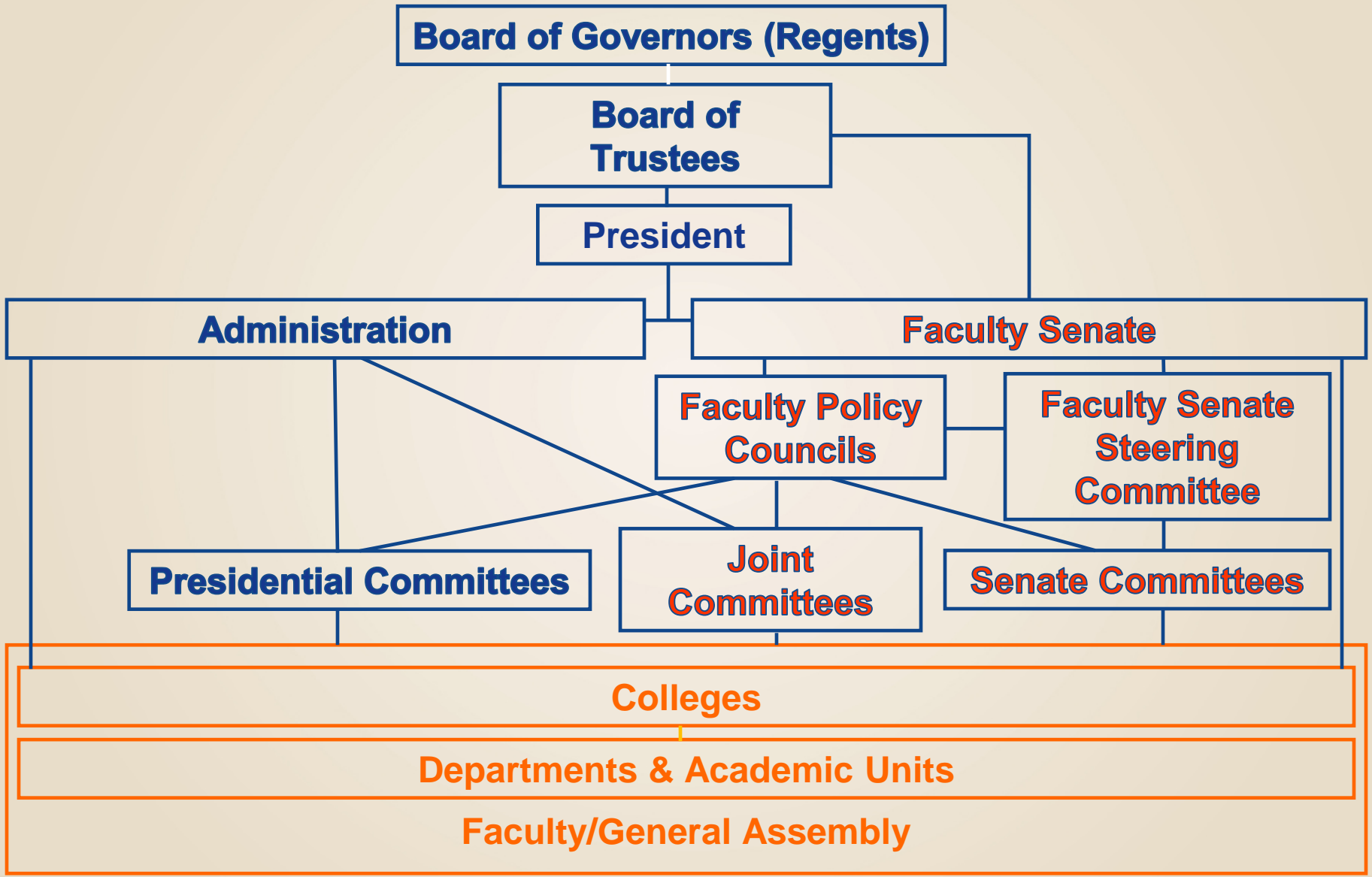
Members at Large:

Mike Katovich, Pharmacy
Nicole Stedman, IFAS
Margaret Temple-Smith, Law

Liaisons (non-voting):

Bernie Machen, President
Joe Glover, Provost
Barbara Wingo, Parliamentarian
Sue Alvers, Secretary

UF Model for Shared Governance



Five Policy Councils

Policy Councils are comprised of Senators, elected by the Senate. They are charged with making policy recommendations and serve as liaisons between the Senate and the administration within their areas:

- Academic Policy
- Faculty Welfare
- Budget
- Research and Scholarship
- Academic Infrastructure

University Committees

Senate Standing Committees – members are elected by the Senate from the faculty at large

Joint Committees – members are elected by the Senate and appointed by the President from the faculty at large

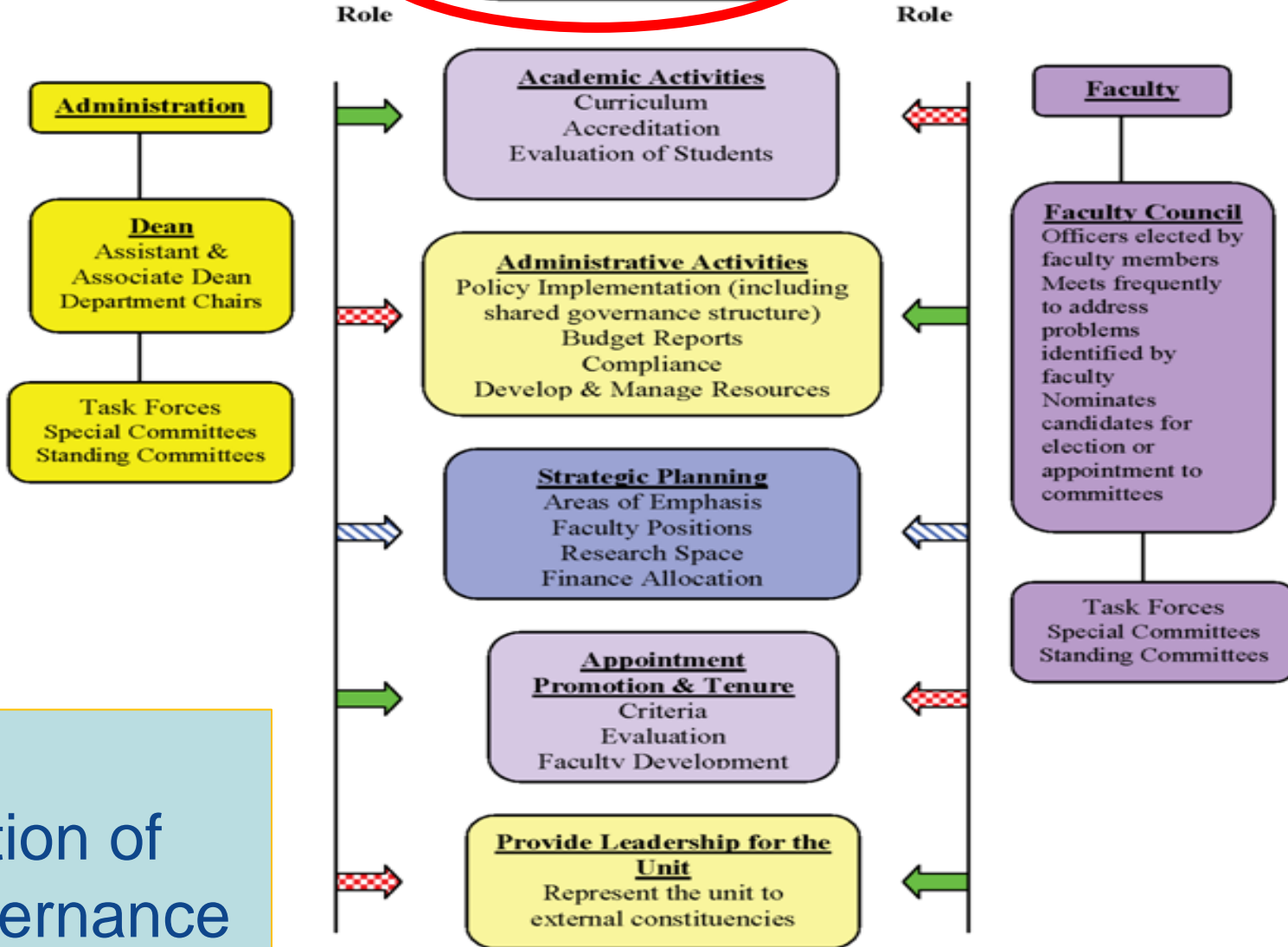
Presidential Committees – members are appointed by and report to the President

Council/Committee Reporting Structure

Policy Council	Senate Committees	Joint Committees
Academic Policy	Honorary Degrees Committee	General Education Council University Curriculum Student Petitions
Faculty Welfare	Academic Freedom, Tenure, Professional Relations and Standards Compensation Committee	Academic Personnel Board
Budget		
Research & Scholarship		Research Policy Committee Graduate Council
Academic Infrastructure	University Libraries	Land Use and Facilities Planning Lakes, Vegetation and Landscaping Parking and Transportation Preservation of Historic Buildings and Sites Sustainability Committee

Liaisons to the Senate

- President and Provost
- Vice Presidents of the University
- Deans of academic units
- Registrar
- Members of the Senate Steering Committee
- Chairs of committees and councils (if not elected members of the Senate)
- Five undergraduate students
- Seven graduate students



Graphic Representation of Shared Governance

Five Policy Councils

- Academic Policy
- Faculty Welfare
- Budget
- Research and Scholarship
- Academic Infrastructure

Academic Policy Council

- Admission and graduation requirements, majors, departments, colleges, other academic units, and other academic programs of study
- Evaluates any proposed changes in academic organization that are not contained within a single college
- Student life as it affects student academic performance

Budget Council

- Formulates policy with respect to budget priorities involving academics and research
- Monitors past budget allocations
- Makes recommendations regarding long range allocations and costs of strategic plans

Faculty Welfare Council

- Academic criteria for appointment to the faculty and for promotion and tenure
- Academic merits of candidates for administrative positions of academic significance
- Faculty diversity
- Matters important to the quality of faculty life
- Academic freedom

Research & Scholarship Council

- Appropriate policies and priorities to support the quality, stature, and relevance of the University's research initiatives
- Existing, expanded and new interdisciplinary research initiatives based on the expertise of the faculty
- Matters concerning graduate and undergraduate research experience

Academic Infrastructure Council

- Facilities and services necessary for academic excellence
- Liaisons include libraries, computing, sustainability, historical preservation, parking, physical plant and maintenance, environment
- Quality and retention of staff

Why Serve in Shared Governance?

- Help set policy that contributes to academic excellence
- Develop an overview of how the university works
- Meet other faculty outside your own program
- Explore interdisciplinary potential of work at UF
- Understand long-term impact of decisions
- Develop an institutional memory
- Network with other leaders

Senate Contacts

- Chair: Marc Heft,
FacultySenateChair@ufl.edu, ~~392-9019~~
- Senate Secretary: Sue Alvers
salvers@ufl.edu, 392-9019
- Senate Office: 134 Tigert
- Senate website: <http://www.senate.ufl.edu/>

Your Role as a New Senator

Take an active role

- Attendance and participation
- Organize colleagues in academic unit
- Committee participation

Communicate

- Early
- Openly
- Often
- www.senate.ufl.edu

UF | UNIVERSITY *of*
FLORIDA

The Foundation for The Gator Nation

Basic Parliamentary Procedures for Members

Barbara C. Wingo
Parliamentarian

UF | UNIVERSITY *of*
FLORIDA

The Foundation for The Gator Nation